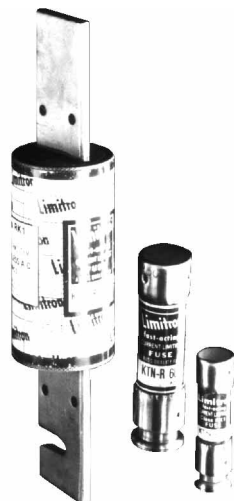


# Limitron® Fast-Acting Fuses 600 Volt

KTS-R  
1-600A



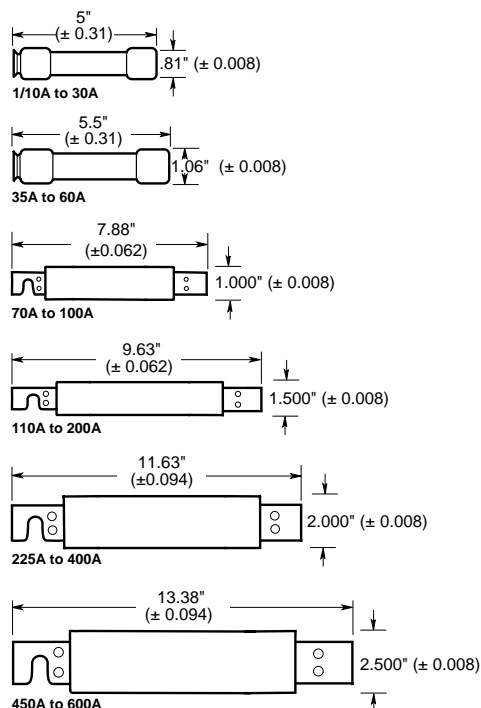
Catalog Symbol: KTS-R  
Fast-Acting  
Current-Limiting  
Ampere Rating: 1 to 600A  
Voltage Rating: 600Vac (or less)\*  
Interrupting Rating: 200,000A RMS Sym.  
Tube Material: Glass Melamine  
End Caps: 70/30 Brass  
Operating Temp.: -40°C to +85°C  
Storage Temp.: -55°C to +85°C  
Agency Information:  
UL Listed, Std. 248-12, Class RK1, Guide JDDZ, File E54273  
CSA Certified, C22.2 No. 248.12, Class 1422-02, File 53787  
\*0-600A is rated 300Vdc and 10 KAIR.

### Catalog Numbers

KTS-R-1	KTS-R-30	KTS-R-125
KTS-R-2	KTS-R-35	KTS-R-150
KTS-R-3	KTS-R-40	KTS-R-175
KTS-R-4	KTS-R-45	KTS-R-200
KTS-R-5	KTS-R-50	KTS-R-225
KTS-R-6	KTS-R-60	KTS-R-250
KTS-R-8	KTS-R-70	KTS-R-300
KTS-R-10	KTS-R-75	KTS-R-350
KTS-R-12	KTS-R-80	KTS-R-400
KTS-R-15	KTS-R-90	KTS-R-450
KTS-R-20	KTS-R-100	KTS-R-500
KTS-R-25	KTS-R-110	KTS-R-600

CE logo denotes compliance with European Union Low Voltage Directive (50-1000Vac, 75-1500Vdc). Refer to Data Sheet: 8002 or contact Bussmann Application Engineering at 314-527-1270 for more information.

### Dimensional Data



### Carton Quantity and Weight (600Vac)\*

Amps	Carton Qty.	Weight**	
		Lbs.	Kg.
1-30	10	1.45	0.657
40-60	10	2.63	1.262
70-100	1	0.5	0.226
110-200	1	1.4	0.634
225-400	1	2.75	1.246
450-600	1	4.25	1.925

\*-Contact Bussmann for dc ratings.  
\*\*-Weight per carton.

### General Information:

- Single-element, fast-acting fuses with minimal time-delay.
- Provides a high degree of short-circuit current-limitation (component protection).
- Particularly suited for circuits and loads with no heavy surge currents of motors, transformers, solenoids, and welders.
- LIMITRON fuses are commonly used to protect circuit breakers with lower interrupting ratings.
- If used in circuits with surge currents (motors, etc.) must be sized to prevent unwanted opening and thus only provide short-circuit protection.
- Incorporate Class R rejection feature. Can be inserted in non-rejection type fuseholders. Thus, can physically and electrically replace fast-acting Class H, K1, K5, RK5, and other fast-acting fuses.

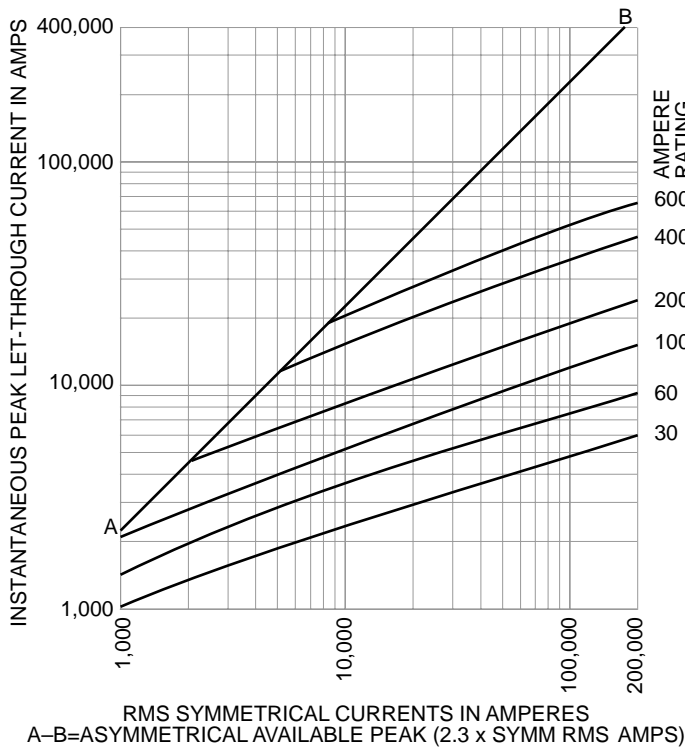
# Limitron®

## Fast-Acting Fuses

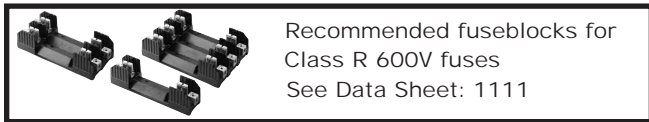
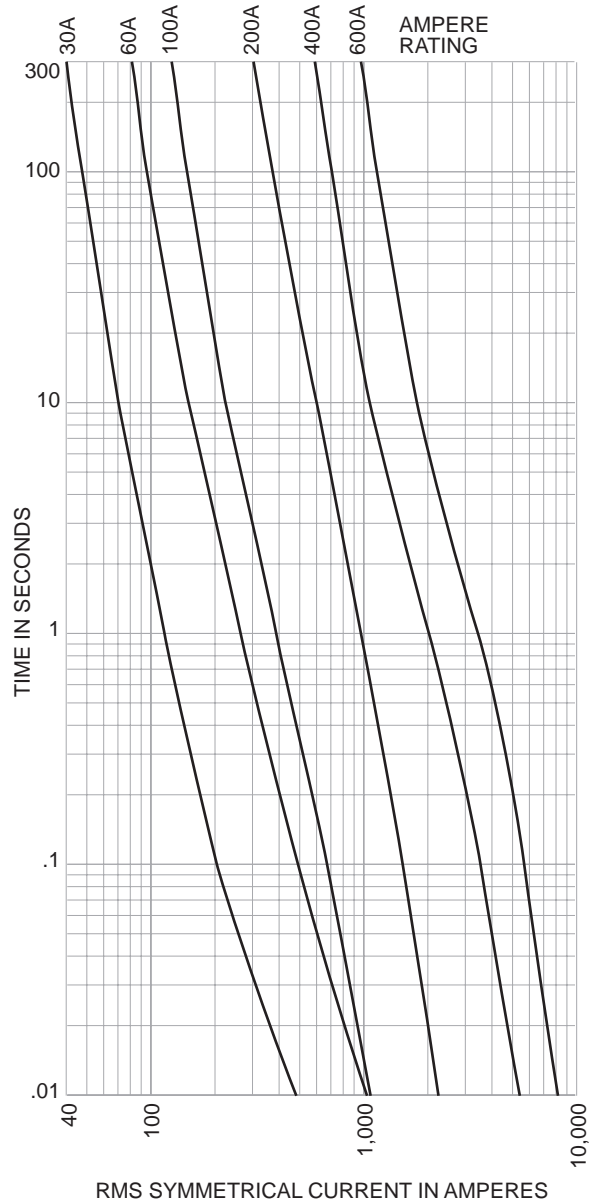
### 600 Volt

KTS-R  
1-600A

Current-Limitation Curves



Time-Current Characteristic Curves-Average Melt



The only controlled copy of this Data Sheet is the electronic read-only version located on the Bussmann Network Drive. All other copies of this document are by definition uncontrolled. This bulletin is intended to clearly present comprehensive product data and provide technical information that will help the end user with design applications. Bussmann reserves the right, without notice, to change design or construction of any products and to discontinue or limit distribution of any products. Bussmann also reserves the right to change or update, without notice, any technical information contained in this bulletin. Once a product has been selected, it should be tested by the user in all possible applications.